

SECTION P/N	LENGTH	LEGS	BRACES	FACE WIDTH
R1	10' (3)	RSSL-1 U 2.3/4" X 3/16" (U 70 X 4.8 mm)	RSLD-1 1"Ø X 18GA. (25Ø x 1.2 mm)	21" (550 mm)
R2	10' (3)	RSSL-2 U 2.3/4" X 3/16" (U 70 X 4.8 mm)	RSLD-2 1"Ø X 18GA. (25Ø x 1.2 mm)	24" (625 mm)
R3	10' (3)	RSSL-3 U 2.3/4" X 3/16" (U 70 X 4.8 mm)	RSLD-3 1"Ø X 18GA. (25Ø x 1.2 mm)	27" (700 mm)
R4	10' (3)	RSSL-4 U 2.3/4" X 3/16" (U 70 X 4.8 mm)	RSLD-4 1"Ø X 18GA. (25Ø x 1.2 mm)	30" (775 mm)
R5	10' (3)	RSSL-5 U 2.3/4" X 3/16" (U 70 X 4.8 mm)	RSLD-5 1"Ø X 18GA. (25Ø x 1.2 mm)	33" (850 mm)
R6	10' (3)	RSSL-6 U 2.3/4" X 3/16" (U 70 X 4.8 mm)	RSLD-6 1"Ø X 18GA. (25Ø x 1.2 mm)	36" (925 mm)
R7	10' (3)	RSSL-7 U 2.3/4" X 3/16" (U 70 X 4.8 mm)	RSLD-7 1"Ø X 18GA. (25Ø x 1.2 mm)	39" (1000 mm)
R8H	10' (3)	RSSL-8 U 2.3/4" X 1/4" (U 70 X 6.4 mm)	RSLD-8H 1.1/4"Ø X 16GA. (32Ø x 1.7 mm)	42" (1075 mm)
R9H	10' (3)	RSSL-9 U 2.3/4" X 1/4" (U 70 X 6.4 mm)	RSLD-9H 1.1/4"Ø X 16GA. (32Ø x 1.7 mm)	45" (1150 mm)
R10H	10' (3)	RSSL-10 U 2.3/4" X 1/4" (U 70 X 6.4 mm)	RSLD-10H 1.1/4"Ø X 16GA. (32Ø x 1.7 mm)	48" (1225 mm)
				51" (1300 mm)

21"
(550 mm)
TOP HORIZONTAL
L 3 1/2" X 3 1/2" X 1/4"
(L 89 X 89 X 6.4 mm)

RSL GENERAL NOTES

- DIMENSIONS INDICATED FOR HEIGHTS, FACE WIDTHS AND MEMBER LENGTHS ARE NOMINAL AND MAY VARY WITH THE BASE AND TOP MOUNT OPTIONS SELECTED. ACTUAL DIMENSIONS FOR SPECIFIC CONFIGURATIONS ARE AVAILABLE UPON REQUEST.
- MATERIAL SPECIFICATIONS: LEGS, 65 KSI [450 MPA]; 1" [25 MM] DIA. BRACES, 30 KSI [210 MPA]; 1-1/4" [32 MM] DIA. BRACES, 50 KSI [350 MPA]; ANGLES, 50 KSI [350 MPA]; BASE PLATES, 50 KSI [350 MPA]; 3/8" [10 MM] DIA. BRACE BOLTS, GR5; 5/8" [16 MM] DIA. LEG SPLICE BOLTS, A325. ALL MATERIAL GALVANIZED AFTER FABRICATION IN ACCORDANCE WITH ANSI/TIA-222-G.
- DESIGNS ASSUME MAINTENANCE AND INSPECTION WILL BE PERFORMED OVER THE LIFE OF THE STRUCTURE IN ACCORDANCE WITH ANSI/TIA-222-G. ALL TOWERS SHOULD BE THOROUGHLY INSPECTED BY QUALIFIED PERSONNEL AND RE-MARKED AS REQUIRED WITH APPROPRIATE DANGER AND ANTI-CLIMB LABELS AT LEAST TWICE A YEAR TO ENSURE SAFETY AND PROPER PERFORMANCE.
- STANDARD RSL TOWER KITS ARE INTENDED TO BE CLIMBED BY SKILLED AND COMPETENT CLIMBERS ONLY. THE STANDARD RSL TOWER KITS CONFORM TO BOTH CLASS A AND CLASS B ANSI/TIA-222-G CLIMBING FACILITIES WHEN STEP BOLTS ARE PROVIDED WITH A SAFETY CLIMB DEVICE.
- FOUNDATIONS MUST BE DESIGNED FOR THE CONDITIONS EXISTING AT A SITE. THE ADEQUACY OF STANDARD FOUNDATIONS MUST BE DETERMINED PRIOR TO INSTALLATION.

RSL ASSEMBLY NOTES

- INSTALLATION AND DISMANTLING MUST BE PERFORMED BY QUALIFIED AND EXPERIENCED PERSONNEL AND BE IN CONFORMANCE WITH ANSI/TIA-222-G AND ANSI/TIA-1019-A.
- DO NOT INSTALL OR DISMANTLE STRUCTURES WITHIN FALLING DISTANCE OF ELECTRICAL AND/OR TELEPHONE LINES WITHOUT TAKING SPECIAL PRECAUTIONS IN ACCORDANCE WITH THE APPROPRIATE UTILITY.
- ALL MEMBERS ARE STAMPED WITH A PART NUMBER. ALL LEGS MUST BE INSTALLED WITH THE LEG PART NUMBER AT THE BOTTOM OF THE SECTION FOR PROPER FIT UP. LEG SPLICE HARDWARE IS INCLUDED IN THE SECTION KIT FOR THE UPPER SECTION AT A SPLICE. ALL BRACES FOR A GIVEN SECTION ARE OF THE SAME LENGTH.
- ALL BOLTED CONNECTIONS AND ANCHOR BOLTS (WHEN UTILIZED) MUST BE TIGHTENED TO A SNUG TIGHT CONDITION AS A MINIMUM (MEMBERS IN FIRM CONTACT) AND MUST INCLUDE A NUT LOCKING DEVICE OR SELF-LOCKING NUT (INCLUDED WITH TOWER KIT). NO MINIMUM BOLT TENSION OR TORQUE VALUES ARE REQUIRED. NO FIELD WELDING IS REQUIRED. WHEN LOCK WASHERS ARE USED AS A NUT LOCKING DEVICE, REPLACE ANY DAMAGED WASHERS DUE TO OVER TIGHTENING.
- INSTALLATION MUST BE GROUNDED IN ACCORDANCE WITH LOCAL AND NATIONAL CODES. ANSI/TIA-222-G REQUIRES THAT THE RESISTANCE TO GROUND MUST NOT EXCEED 10 OHMS. ADDITIONAL GROUNDING MAY BE REQUIRED IN ADDITION TO THE ROHN STANDARD GROUNDING KIT AVAILABLE AS AN OPTION FOR THE RSL TOWER DEPENDING ON THE SOIL CONDITIONS AT A SITE.
- INSTALLATION MUST BE IN CONFORMANCE WITH LOCAL, STATE AND FEDERAL REQUIREMENTS FOR OBSTRUCTION MARKING AND LIGHTING.
- WARNING PLATE PART NUMBER AWCS PROVIDED WITH AN RSL TOWER KIT MUST BE INSTALLED IN A HIGHLY VISIBLE LOCATION AT THE BASE OF THE TOWER.
- ALL DIMENSIONS IN PARENTHESES ARE IN METERS, UNLESS OTHERWISE NOTED.

RSL ORDERING INFORMATION

- FOUNDATION BASES MUST BE ORDERED SEPARATELY.
- ALL ACCESSORIES MUST BE ORDERED SEPARATELY INCLUDING STEP BOLT KITS, SAFETY CLIMB SYSTEMS, CLIMBING HARNESS WITH SLIDER, GROUNDING KITS, LIGHTNING RODS, TOP PLATE, TOP MAST, MOUNTING KITS, W/G BRACKETS, ANTI-CLIMB ASSEMBLIES, ETC.
- ROHN STANDARD RSL TOWER KITS ARE SUPPLIED WITH LOCK WASHERS AS NUT LOCKING DEVICES. PAL NUTS (P), ANCO NUTS (A) AND TRI-LOC NUTS (T) ARE ALTERNATIVE NUT LOCKING DEVICES THAT MAY BE OBTAINED BY ADDING THE INDICATED SUFFIX TO THE STANDARD RSL TOWER KIT PART NUMBER. (NOTE: NUT LOCKING DEVICES ARE REQUIRED IN ACCORDANCE WITH ANSI/TIA-222-G.)
- ALL THREE TOWER LEGS IN EACH SECTION HAVE PROVISION TO INSTALL STEP BOLTS AND A SAFETY CLIMB SYSTEM. WHEN STEP BOLTS ARE DESIRED, ONE STEP BOLT KIT MUST BE ORDERED FOR EACH SECTION OF THE TOWER. INCREASE THE NUMBER OF STEP BOLT KITS ACCORDINGLY WHEN STEP BOLTS ARE DESIRED ON MORE THAN ONE TOWER LEG OF A SECTION.

RSL TOWER KITS			
HEIGHT	KIT #	SECTIONS	TOP HORZ BRACE
100' (30)	RSL100L10	R1-R10H	RSLH1A
90' (27)	RSL90L19	R1-R9H	RSLH1A
	RSL90L20	R2-R10H	RSLH2A
80' (24)	RSL80L18	R1-R8H	RSLH1A
	RSL80L29	R2-R9H	RSLH2A
	RSL80L30	R3-R10H	RSLH3A
70' (21)	RSL70L17	R1-R7	RSLH1A
	RSL70L28	R2-R8H	RSLH2A
	RSL70L39	R3-R9H	RSLH3A
	RSL70L40	R4-R10H	RSLH4A
60' (18)	RSL60L16	R1-R6	RSLH1A
	RSL60L49	R4-R9H	RSLH4A
	RSL60L50	R5-R10H	RSLH5A
50' (15)	RSL50L15	R1-R5	RSLH1A
	RSL50L59	R5-R9H	RSLH5A
	RSL50L60	R6-R10H	RSLH6A
40' (12)	RSL40L14	R1-R4	RSLH1A
	RSL40L70	R7-R10H	RSLH7A
30' (9)	RSL30L13	R1-R3	RSLH1A
	RSL30H80	R8H-R10H	RSLH8A
20' (6)	RSL20L12	R1-R2	RSLH1A
	RSL2H90	R9H-R10H	RSLH9A

FILE NO.

REVISIONS

REV.	DESCRIPTION	DWN	CHK	APP

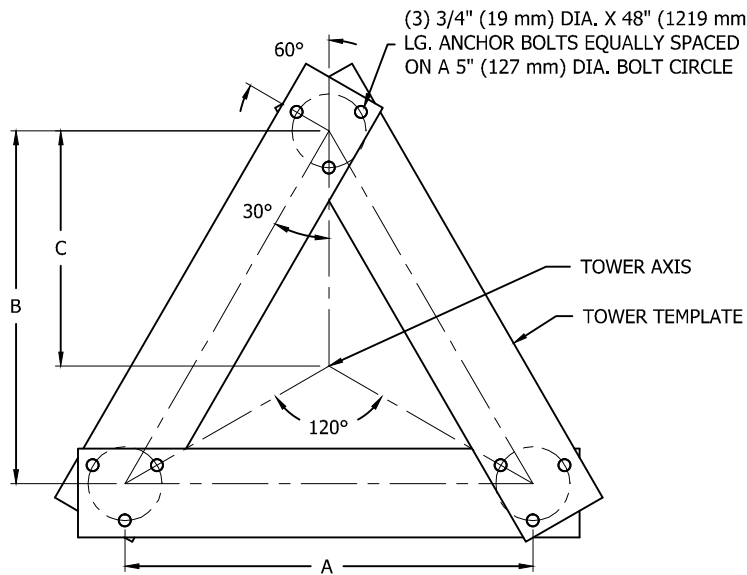
ROHN
PRODUCTS

PO BOX 5999
PEORIA, IL 61601-5999
TOLL FREE 800-727-ROHN

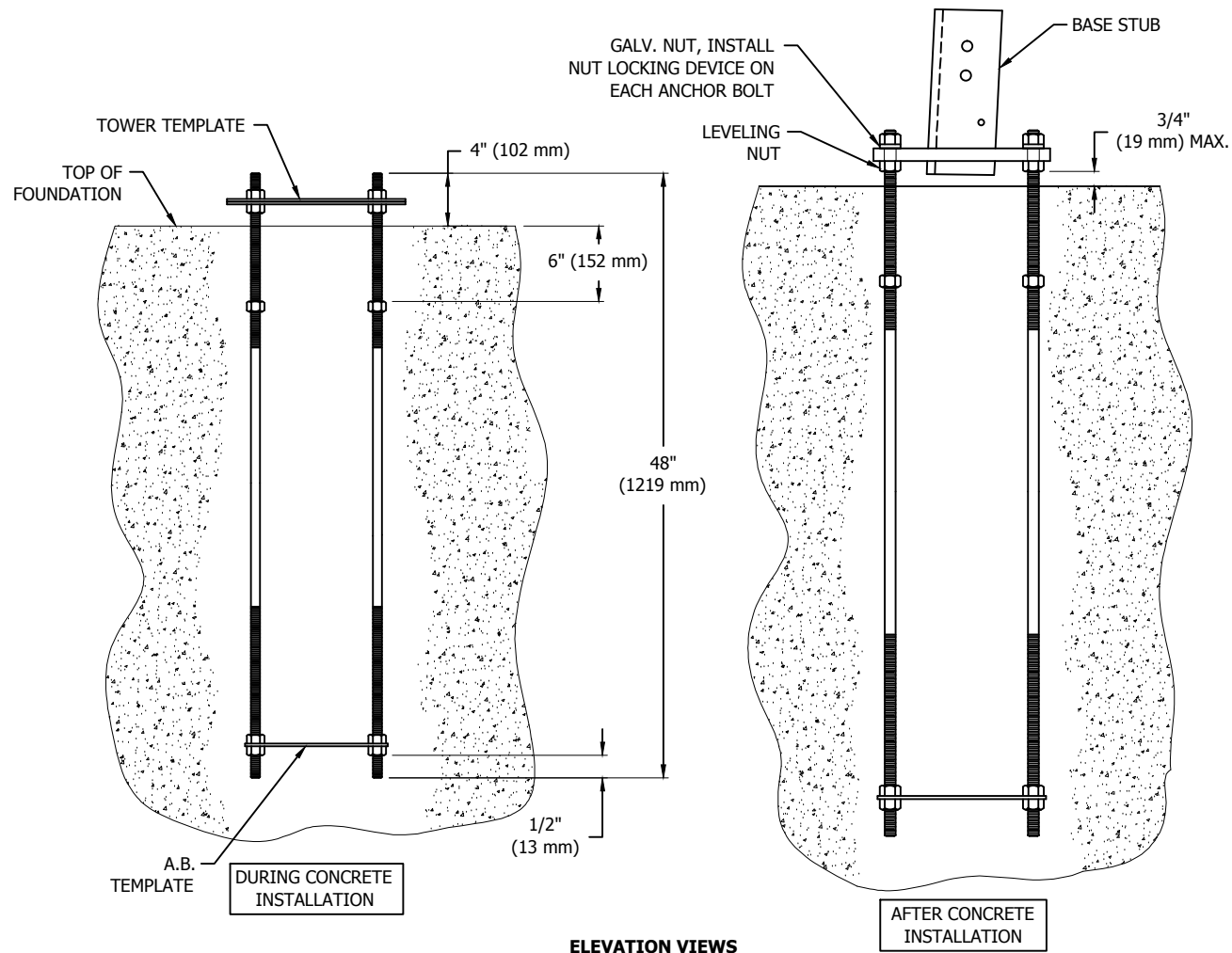
THIS DRAWING IS THE PROPERTY OF ROHN. IT IS NOT TO BE REPRODUCED, COPIED OR TRACED IN WHOLE OR IN PART WITHOUT OUR WRITTEN CONSENT.

RSL TOWER
ASSEMBLY DRAWING
TUBE BRACING

DWN: CEJ	CHK'D: JDM	DATE: 10/26/11
ENGR: DWG	SHEET #: 1 OF 1	
DRAWING NO: RSL-01-A1	REV: 0	



- NOTES**
1. ALL ANCHOR BOLTS MUST MEET OR EXCEED REQUIREMENTS OF A.S.T.M. F1554-S2, S5 GRADE 105. SPECIAL CARE MUST BE TAKEN WHEN LIFTING ANCHOR BOLT CLUSTER, IN ORDER TO PREVENT ANCHOR BOLT TEMPLATE DISTORTION.
 2. ANCHOR BOLT ASSEMBLY MUST BE ADEQUATELY SUPPORTED AND RESTRAINED TO PREVENT MOVEMENT OF THE CLUSTER DURING CONCRETE INSTALLATION.
 3. IT IS THE RESPONSIBILITY OF THE FOUNDATION CONTRACTOR TO VERIFY THAT THE CORRECT ANCHOR BOLT TEMPLATE AND FOUNDATION ARE BEING USED.
 4. IT IS THE RESPONSIBILITY OF THE FOUNDATION DESIGN ENGINEER TO INSURE THAT THE ANCHORAGES PROVIDED ARE COMPATIBLE WITH THE PROPOSED FOUNDATION DESIGN AND THAT THE CAPACITIES OF THE ANCHORAGES ARE NOT LIMITED BY THE STRENGTH OF THE FOUNDATION.
 5. AFTER ANCHOR BOLTS ARE INSTALLED AND CONCRETE HAS TAKEN ITS INITIAL SET, ANCHOR BOLTS MUST NOT BE MOVED, BENT OR REALIGNED IN ANY MANNER. A NUT LOCKING DEVICE MUST BE INSTALLED ON ALL ANCHOR BOLTS.
 6. ALL DIMENSIONS IN PARENTHESES ARE IN METERS, UNLESS OTHERWISE NOTED.
 7. NOMINAL METRIC EQUIVALENTS ARE GIVEN FOR REFERENCE ONLY AND SHALL NOT BE SUBSTITUTED FOR THE DESCRIBED SIZE UNLESS OTHERWISE APPROVED BY ROHN PRODUCTS.



KIT NO.	PART NO.	QTY.	A	B	C	DESCRIPTION
RAL02 (SECTION R2)	RSL2-TEMK	1	2'-3 9/16" (0.700)	1'-11 7/8" (0.606)	1'-3 15/16" (0.405)	TEMPLATE KIT R2
	RSL2-6W	3				LEG STUB R2-6 HDG
	RSL-BOT	3				TEMPLATE .25X7.00"OD BLK
	260093G	9				ANCHOR BOLT 3/4X48 F1554-S5
RAL03 (SECTION R3)	250042	9	2'-6 1/2" (0.775)	2'-2 3/8" (0.670)	1'-5 5/8" (0.448)	WASHER 3/4 SPLIT LOCK
	RSL3-TEMK	1				TEMPLATE KIT R3
	RSL2-6W	3				LEG STUB R2-6 HDG
	RSL-BOT	3				TEMPLATE .25X7.00"OD BLK
RAL04 (SECTION R4)	260093G	9	2'-9 3/8" (0.848)	2'-4 15/16" (0.735)	1'-7 5/16" (0.491)	ANCHOR BOLT 3/4X48 F1554-S5
	250042	9				WASHER 3/4 SPLIT LOCK
	RSL4-TEMK	1				TEMPLATE KIT R4
	RSL2-6W	3				LEG STUB R2-6 HDG
RAL05 (SECTION R5)	RSL-BOT	3	3'-0 5/16" (0.922)	2'-7 7/16" (0.799)	1'-9" (0.533)	TEMPLATE .25X7.00"OD BLK
	260093G	9				ANCHOR BOLT 3/4X48 F1554-S5
	250042	9				WASHER 3/4 SPLIT LOCK
	RSL6-TEMK	1				TEMPLATE KIT R6
RAL06 (SECTION R6)	RSL2-6W	3	3'-3 1/4" (0.997)	2'-10" (0.864)	1'-10 11/16" (0.576)	LEG STUB R2-6 HDG
	RSL-BOT	3				TEMPLATE .25X7.00"OD BLK
	260093G	9				ANCHOR BOLT 3/4X48 F1554-S5
	250042	9				WASHER 3/4 SPLIT LOCK
RAL07 (SECTION R7)	RSL7-TEMK	1	3'-6" (1.067)	3'-0 3/8" (0.924)	2'-0 1/4" (0.616)	TEMPLATE KIT R7
	RSL7-10W	3				LEG STUB R7-10 HDG
	RSL-BOT	3				TEMPLATE .25X7.00"OD BLK
	260093G	9				ANCHOR BOLT 3/4X48 F1554-S5
RAL08 (SECTION R8H)	250042	9	3'-8 11/16" (1.135)	3'-2 11/16" (0.983)	2'-1 13/16" (0.656)	WASHER 3/4 SPLIT LOCK
	RSL8-TEMK	1				TEMPLATE KIT R8H
	RSL7-10W	3				LEG STUB R7-10 HDG
	RSL-BOT	3				TEMPLATE .25X7.00"OD BLK
RAL09 (SECTION R9H)	260093G	9	3'-11 3/8" (1.203)	3'-5 1/16" (1.043)	2'-3 3/8" (0.695)	ANCHOR BOLT 3/4X48 F1554-S5
	250042	9				WASHER 3/4 SPLIT LOCK
	RSL9-TEMK	1				TEMPLATE KIT R9H
	RSL7-10W	3				LEG STUB R7-10 HDG
RAL10 (SECTION R10H)	RSL-BOT	3	4'-2 1/8" (1.273)	3'-7 3/8" (1.102)	2'-4 15/16" (0.735)	TEMPLATE .25X7.00"OD BLK
	260093G	9				ANCHOR BOLT 3/4X48 F1554-S5
	250042	9				WASHER 3/4 SPLIT LOCK
	RSL10-TEMK	1				TEMPLATE KIT R10H
RAL10 (SECTION R10H)	RSL7-10W	3	4'-2 1/8" (1.273)	3'-7 3/8" (1.102)	2'-4 15/16" (0.735)	LEG STUB R7-10 HDG
	RSL-BOT	3				TEMPLATE .25X7.00"OD BLK
	260093G	9				ANCHOR BOLT 3/4X48 F1554-S5
	250042	9				WASHER 3/4 SPLIT LOCK

FILE NO.

REVISIONS				
REV.	DESCRIPTION	DWN	CHK	APP
1	ADDED B.O.M. CHART	CEJ	JDM	DWG
DATE: 07/26/12				

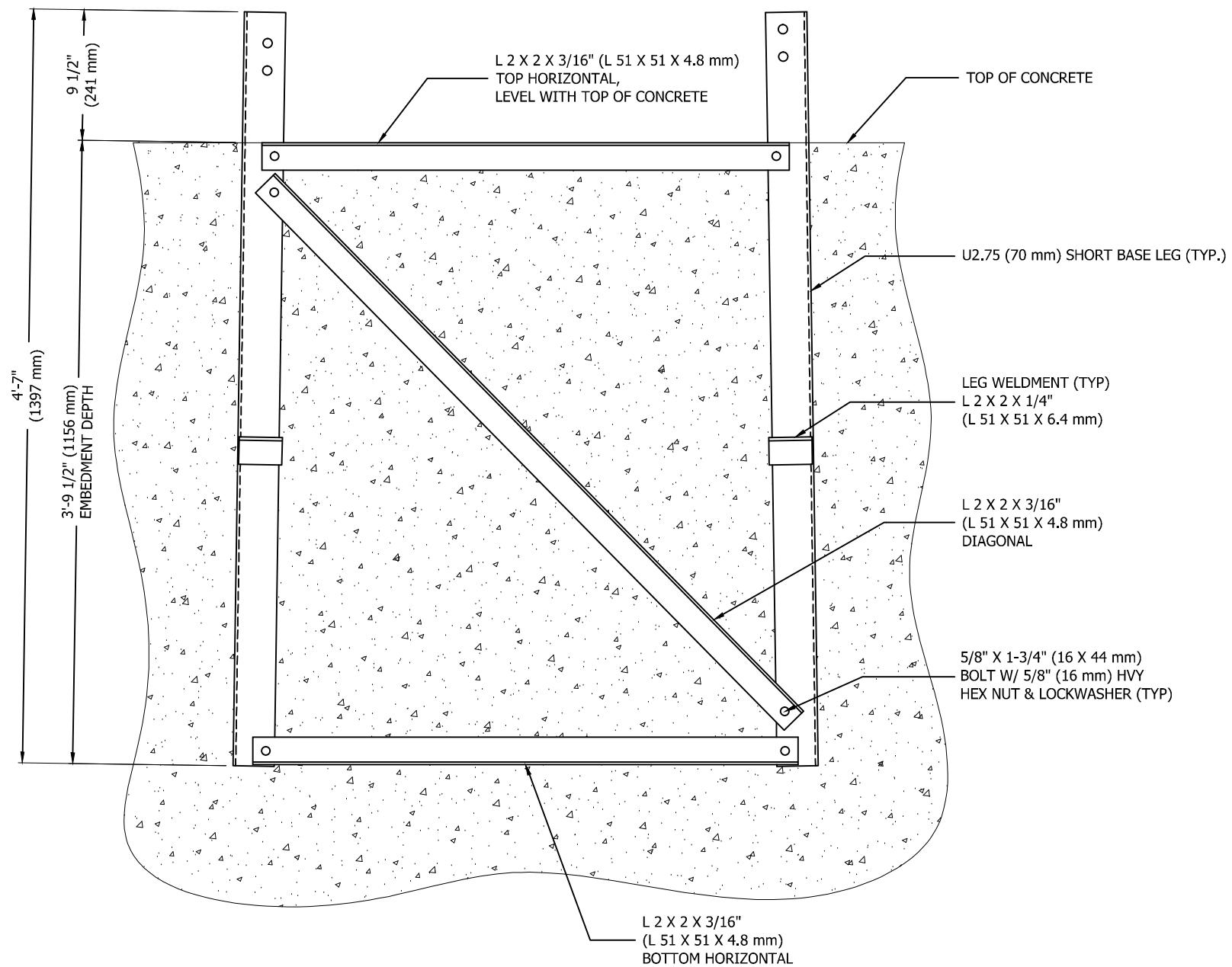
ROHN
PRODUCTS

PO BOX 5999
PEORIA, IL 61601-5999
TOLL FREE 800-727-ROHN

THIS DRAWING IS THE PROPERTY OF ROHN. IT IS NOT TO BE REPRODUCED, COPIED OR TRACED IN WHOLE OR IN PART WITHOUT OUR WRITTEN CONSENT.

RSL TOWER ANCHOR W/ BASE KITS

DWN: ZAW	CHK'D: JDM	DATE: 06/14/12
ENG'R: DWG	SHEET #: 1 OF 1	
DRAWING NO: RSLABL		REV: 1



TOWER SHORT BASE FOUNDATION KIT DETAILS

- NOTES:**
- MAT REINFORCING BARS NOT SHOWN FOR CLARITY.
 - TOP HORIZONTAL MUST BE LEVEL TO RESULT IN A PLUM TOWER INSTALLATION.
 - NOMINAL METRIC EQUIVALENTS ARE GIVEN FOR REFERENCE ONLY AND SHALL NOT BE SUBSTITUTED FOR THE DESCRIBED SIZES UNLESS OTHERWISE APPROVED BY ROHN PRODUCTS.
 - ALL DIMENSIONS IN PARENTHESES ARE IN METERS, UNLESS OTHERWISE NOTED.

KIT NO.	PART NO.	QTY.	DESCRIPTION
RSB02 (FOR NO. 2 RSL BASE SECTION)	RSLF-BW	3	LEG U2.75X.19X4.58' HDG
	BK2-TOP	3	TOP HORZ L2X2X.19X2.34' HDG
	BK2-MID	3	DIAG L2X2X.19X3.92' HDG
	BK2-BOT	3	BOT HORZ L2X2X.19X2.44' HDG
RSB03 (FOR NO. 3 RSL BASE SECTION)	210030GALW	18	BOLT ASSY 5/8 X 1-3/4 HSB A325
	RSLF-BW	3	LEG U2.75X.19X4.58' HDG
	BK3-TOP	3	TOP HORZ L2X2X.19X2.58' HDG
	BK3-MID	3	DIAG L2X2X.19X4.07' HDG
RSB04 (FOR NO. 4 RSL BASE SECTION)	BK3-BOT	3	BOT HORZ L2X2X.19X2.69' HDG
	210030GALW	18	BOLT ASSY 5/8 X 1-3/4 HSB A325
	RSLF-BW	3	LEG U2.75X.19X4.58' HDG
	BK4-TOP	3	TOP HORZ L2X2X.19X2.82' HDG
RSB05 (FOR NO. 5 RSL BASE SECTION)	BK4-MID	3	DIAG L2X2X.19X4.23' HDG
	BK4-BOT	3	BOT HORZ L2X2X.19X2.93' HDG
	210030GALW	18	BOLT ASSY 5/8 X 1-3/4 HSB A325
	RSLF-BW	3	LEG U2.75X.19X4.58' HDG
RSB06 (FOR NO. 6 RSL BASE SECTION)	BK5-TOP	3	TOP HORZ L2X2X.19X3.07' HDG
	BK5-MID	3	DIAG L2X2X.19X4.40' HDG
	BK5-BOT	3	BOT HORZ L2X2X.19X3.18' HDG
	210030GALW	18	BOLT ASSY 5/8 X 1-3/4 HSB A325
RSB07 (FOR NO. 7 RSL BASE SECTION)	RSLF-BW	3	LEG U2.75X.19X4.58' HDG
	BK6-TOP	3	TOP HORZ L2X2X.19X3.31' HDG
	BK6-MID	3	DIAG L2X2X.19X4.57' HDG
	BK6-BOT	3	BOT HORZ L2X2X.19X3.42' HDG
RSB08 (FOR NO. 8 RSL BASE SECTION)	210030GALW	18	BOLT ASSY 5/8 X 1-3/4 HSB A325
	RSLF-AW	3	LEG U2.75X.19X4.58' HDG
	BK7-TOP	3	TOP HORZ L2X2X.19X3.56' HDG
	BK7-MID	3	DIAG L2X2X.19X4.75' HDG
RSB09 (FOR NO. 9 RSL BASE SECTION)	BK7-BOT	3	BOT HORZ L2X2X.19X3.66' HDG
	210030GALW	18	BOLT ASSY 5/8 X 1-3/4 HSB A325
	RSLF-AW	3	LEG U2.75X.19X4.58' HDG
	BK8-TOP	3	TOP HORZ L2X2X.19X3.78' HDG
RSB10 (FOR NO. 10 RSL BASE SECTION)	BK8-MID	3	DIAG L2X2X.19X4.92' HDG
	BK8-BOT	3	BOT HORZ L2X2X.19X3.89' HDG
	210030GALW	18	BOLT ASSY 5/8 X 1-3/4 HSB A325
	RSLF-AW	3	LEG U2.75X.19X4.58' HDG
RSB10 (FOR NO. 10 RSL BASE SECTION)	BK9-TOP	3	TOP HORZ L2X2X.19X4.01' HDG
	BK9-MID	3	DIAG L2X2X.19X5.10' HDG
	BK9-BOT	3	BOT HORZ L2X2X.19X4.12' HDG
	210030GALW	18	BOLT ASSY 5/8 X 1-3/4 HSB A325
RSB10 (FOR NO. 10 RSL BASE SECTION)	RSLF-AW	3	LEG U2.75X.19X4.58' HDG
	BK10-TOP	3	TOP HORZ L2X2X.19X4.23' HDG
	BK10-MID	3	DIAG L2X2X.19X5.28' HDG
	BK10-BOT	3	BOT HORZ L2X2X.19X4.34' HDG
210030GALW	18	BOLT ASSY 5/8 X 1-3/4 HSB A325	

FILE NO.

REVISIONS				
REV.	DESCRIPTION	DWN	CHK	APP
2	ADDED NOTES & FIXED B.O.M.	CEJ	JDM	DWG
DATE: 07/26/12				

ROHN
PRODUCTS

PO BOX 5999
PEORIA, IL 61601-5999
TOLL FREE 800-727-ROHN

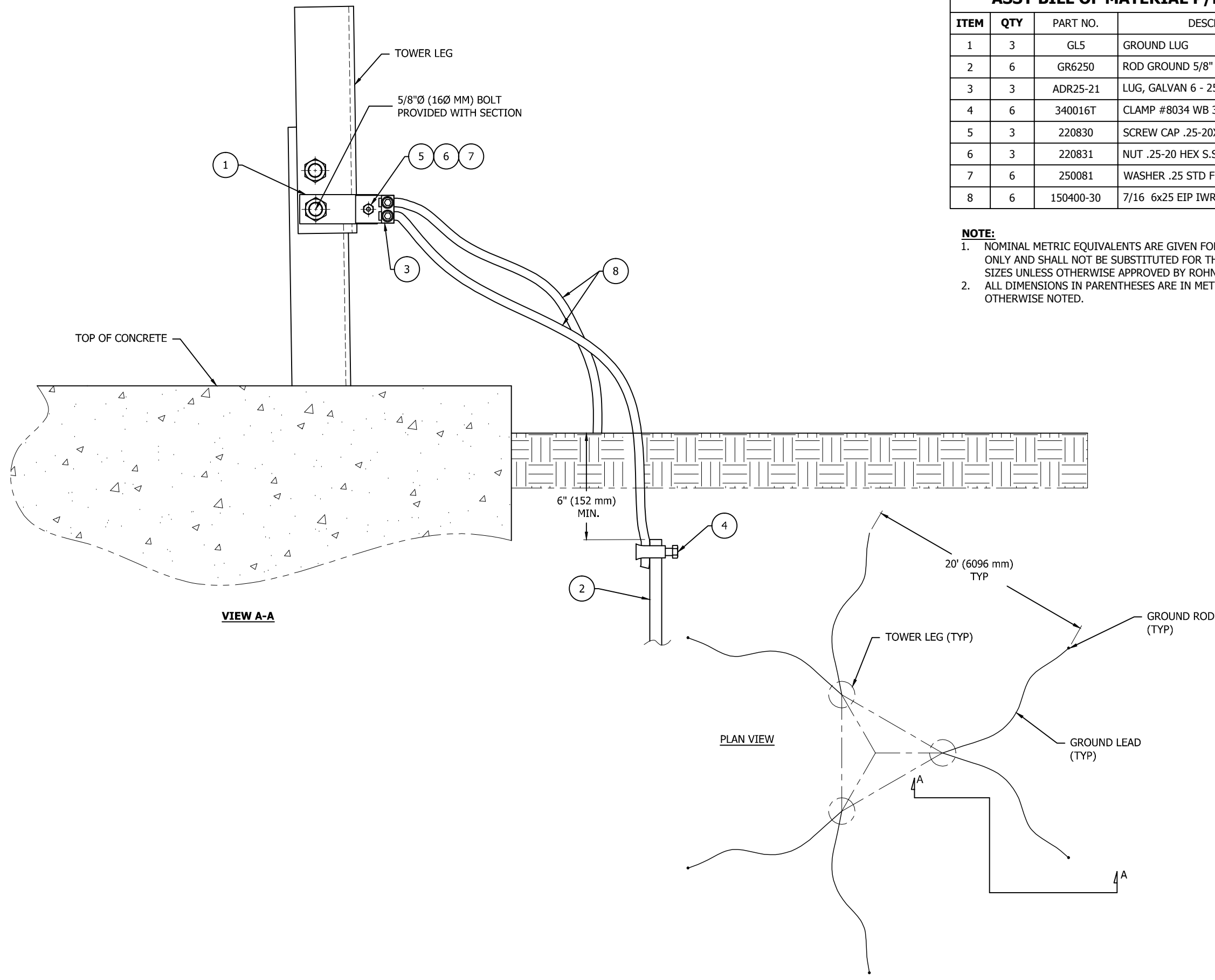
THIS DRAWING IS THE PROPERTY OF ROHN. IT IS NOT TO BE REPRODUCED, COPIED OR TRACED IN WHOLE OR IN PART WITHOUT OUR WRITTEN CONSENT.


**RSL TOWER
SHORT BASE KITS**

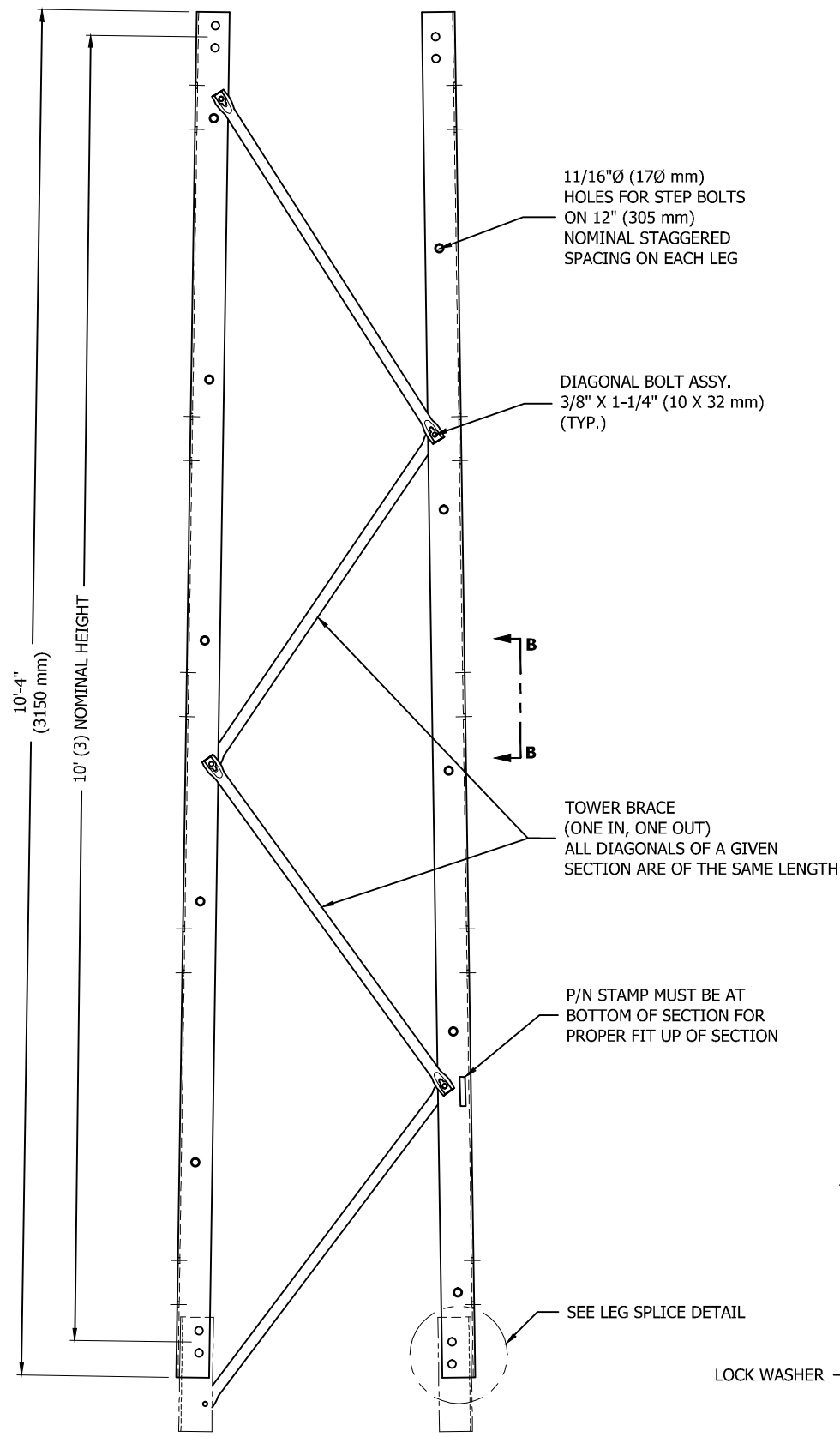
DWN: CEJ	CHK'D: JDM	DATE: 05/21/2012
ENGR: HA	SHEET #: 1 OF 1	
DRAWING NO: RSLSBK	REV: 2	

ASSY BILL OF MATERIAL P/N: RGKG			
ITEM	QTY	PART NO.	DESCRIPTION
1	3	GL5	GROUND LUG
2	6	GR6250	ROD GROUND 5/8" X 10' HDG
3	3	ADR25-21	LUG, GALVAN 6 - 250 ALCU
4	6	340016T	CLAMP #8034 WB 3/4 TINNED
5	3	220830	SCREW CAP .25-20X1.00" S.S.
6	3	220831	NUT .25-20 HEX S.S.
7	6	250081	WASHER .25 STD FLAT SS
8	6	150400-30	7/16 6x25 EIP IWRC RRL 30'

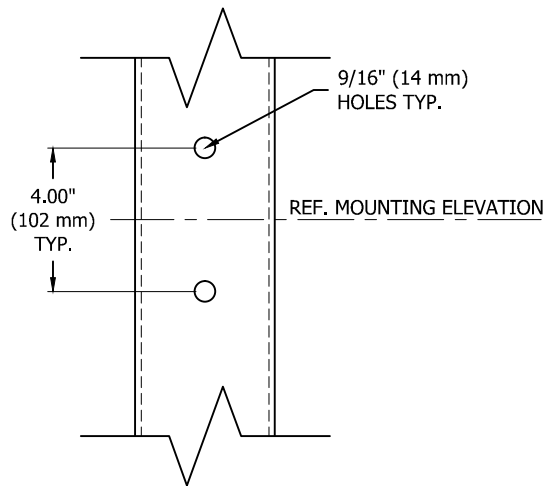
NOTE:
 1. NOMINAL METRIC EQUIVALENTS ARE GIVEN FOR REFERENCE ONLY AND SHALL NOT BE SUBSTITUTED FOR THE DESCRIBED SIZES UNLESS OTHERWISE APPROVED BY ROHN PRODUCTS.
 2. ALL DIMENSIONS IN PARENTHESES ARE IN METERS, UNLESS OTHERWISE NOTED.



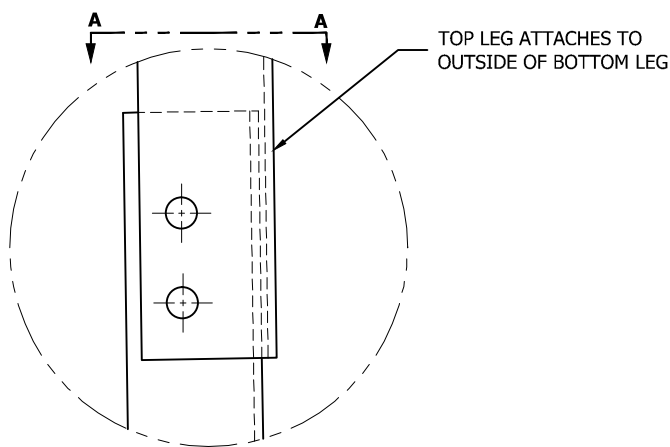
FILE NO.				
REVISIONS				
REV.	DESCRIPTION	DWN	CHK	APP
2	ADDED METRIC DIMENSIONS	CEJ	JDM	DWG
DATE: 07/31/12				
 PO BOX 5999 PEORIA, IL 61601-5999 TOLL FREE 800-727-ROHN				
THIS DRAWING IS THE PROPERTY OF ROHN. IT IS NOT TO BE REPRODUCED, COPIED OR TRACED IN WHOLE OR IN PART WITHOUT OUR WRITTEN CONSENT.				
RSL TOWER REV G GRD KIT				
DWN:	CHK'D:	DATE:		
CEJ	JDM	02/22/12		
ENGR:	SHEET #:		REV:	
HA	1 OF 1		2	
DRAWING NO:				REV:
RGKG				2



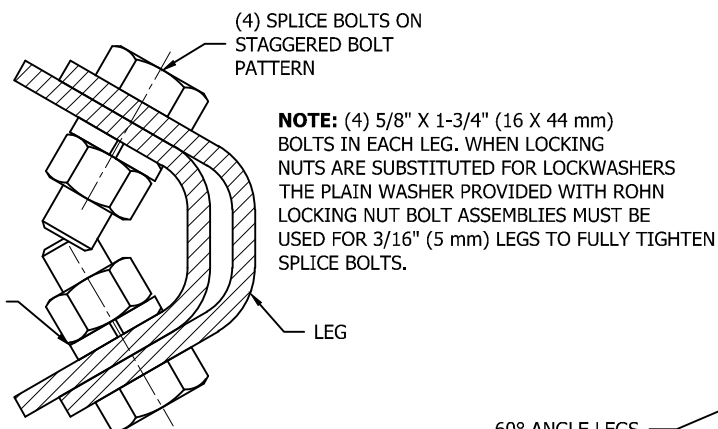
ELEVATION VIEW



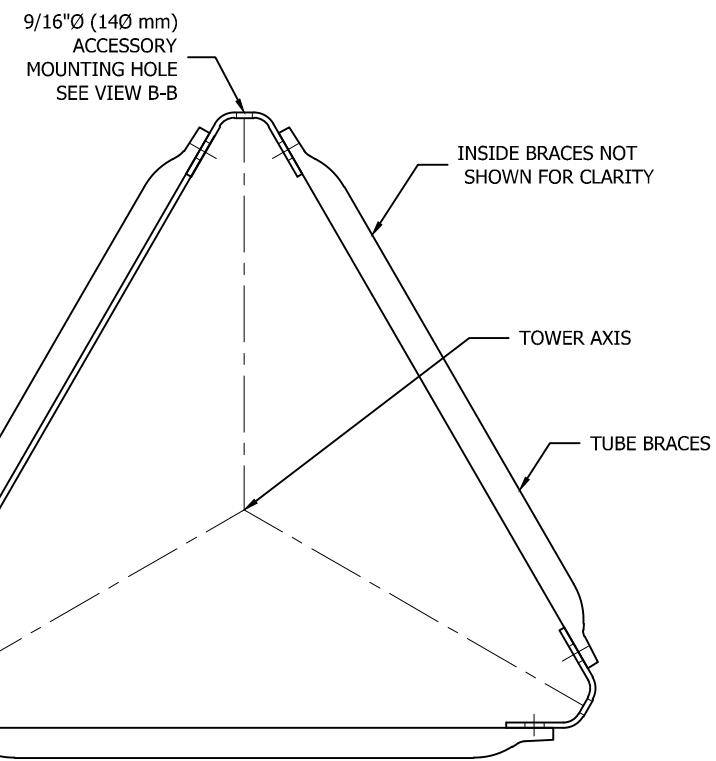
VIEW B-B
ACCESSORY MOUNTING HOLES IN EACH LEG LOCATED FOR NOMINAL MOUNTING ELEVATIONS 6" (152 mm) FROM EACH END AND THEN 3' (914 mm), 5' (1524 mm) AND 7' (2134 mm) ELEVATIONS OF EACH SECTION



LEG SPLICE DETAIL



VIEW A-A



CROSS SECTION

SECTION	NOMINAL BRACE LENGTH
R1	38" (965 mm)
R2	40" (1016 mm)
R3	42" (1067 mm)
R4	44" (1118 mm)
R5	46" (1168 mm)
R6	48" (1219 mm)
R7	50" (1270 mm)
R8H	52" (1321mm)
R9H	55" (1397 mm)
R10H	57" (1448 mm)

REFER TO SHEET 2 FOR SECTION BILL OF MATERIALS

- NOTE:**
- NOMINAL METRIC EQUIVALENTS ARE GIVEN FOR REFERENCE ONLY AND SHALL NOT BE SUBSTITUTED FOR THE DESCRIBED SIZES UNLESS OTHERWISE APPROVED BY ROHN PRODUCTS.
 - ALL DIMENSIONS IN PARENTHESES ARE IN METERS, UNLESS OTHERWISE NOTED.

FILE NO.

REVISIONS				
REV.	DESCRIPTION	DWN	CHK	APP
2	ADDED METRIC DIMENSIONS TO DRAWING	CEJ	JDM	DWG
DATE: 07/30/12				

ROHN PRODUCTS

PO BOX 5999
PEORIA, IL 61601-5999
TOLL FREE 800-727-ROHN

THIS DRAWING IS THE PROPERTY OF ROHN. IT IS NOT TO BE REPRODUCED, COPIED OR TRACED IN WHOLE OR IN PART WITHOUT OUR WRITTEN CONSENT.

RSL TOWER SECTION DETAILS TUBE BRACING

DWN: CEJ	CHK'D: JDM	DATE: 05/21/2012
ENGR: HA	SHEET #: 1 OF 2	
DRAWING NO: RSLSEC110-1	REV: 2	

FILE NO.

REVISIONS

REV.	DESCRIPTION	DWN	CHK	APP
2	UPDATED TABLE DATE: 07/30/12	CEJ	JDM	DWG

SECTION BILL OF MATERIALS			
SECTION	PART NO.	QTY	DESCRIPTION
R1	RSLL-1	3	U 2.75"X.19"X10.33' HDG
	RSLD-1	12	BRACE R1 1.00"ODX18GAX3.15'
	210005GALW	15	BOLT ASSY 3/8 X 1-1/4 G5
	210030GALW	12	BOLT ASSY 5/8 X 1-3/4 A325
R2	RSLL-2	3	U 2.75"X.19"X10.33' HDG
	RSLD-2	12	BRACE R2 1.00"ODX18GAX3.30'
	210005GALW	15	BOLT ASSY 3/8 X 1-1/4 G5
	210030GALW	12	BOLT ASSY 5/8 X 1-3/4 A325
R3	RSLL-3	3	U 2.75"X.19"X10.33' HDG
	RSLD-3	12	BRACE R3 1.00"ODX18GAX3.46'
	210005GALW	15	BOLT ASSY 3/8 X 1-1/4 G5
	210030GALW	12	BOLT ASSY 5/8 X 1-3/4 A325
R4	RSLL-4	3	U 2.75"X.19"X10.33' HDG
	RSLD-4	12	BRACE R4 1.00"ODX18GAX3.62'
	210005GALW	15	BOLT ASSY 3/8 X 1-1/4 G5
	210030GALW	12	BOLT ASSY 5/8 X 1-3/4 A325
R5	RSLL-5	3	U 2.75"X.19"X10.33' HDG
	RSLD-5	12	BRACE R5 1.00"ODX18GAX3.80'
	210005GALW	15	BOLT ASSY 3/8 X 1-1/4 G5
	210030GALW	12	BOLT ASSY 5/8 X 1-3/4 A325

SECTION BILL OF MATERIALS			
SECTION	PART NO.	QTY	DESCRIPTION
R6	RSLL-6	3	U 2.75"X.19"X10.33' HDG
	RSLD-6	12	BRACE R6 1.00"ODX18GAX3.98'
	210005GALW	15	BOLT ASSY 3/8 X 1-1/4 G5
	210030GALW	12	BOLT ASSY 5/8 X 1-3/4 A325
R7	RSLL-7	3	U 2.75"X.19"X10.33' HDG
	RSLD-7	12	BRACE R7 1.00"ODX18GAX4.17'
	210005GALW	15	BOLT ASSY 3/8 X 1-1/4 G5
	210030GALW	12	BOLT ASSY 5/8 X 1-3/4 A325
R8H	RSLL-8	3	U 2.75"X.25"X10.33' HDG
	RSLD-8H	12	BRACE R8 1.25"ODX16GAX4.36'
	210005GALW	15	BOLT ASSY 3/8 X 1-1/4 G5
	210030GALW	12	BOLT ASSY 5/8 X 1-3/4 A325
R9H	RSLL-9	3	U 2.75"X.25"X10.33' HDG
	RSLD-9H	12	BRACE R9 1.25"ODX16GAX4.55'
	210005GALW	15	BOLT ASSY 3/8 X 1-1/4 G5
	210030GALW	12	BOLT ASSY 5/8 X 1-3/4 A325
R10H	RSLL-10	3	U 2.75"X.25"X10.33' HDG
	RSLD-10H	12	BRACE R10 1.25"ODX16GAX4.74'
	210005GALW	15	BOLT ASSY 3/8 X 1-1/4 G5
	210030GALW	12	BOLT ASSY 5/8 X 1-3/4 A325

NOTE:
1. BOLT ASSY'S IN B.O.M. ABOVE CONSIST OF BOLT, HEAVY HEX NUTS, & SPRING LOCK WASHER.
2. ADD SUFFIX A, P, OR T TO SECTION PART NUMBER FOR ANCO, PAL OR TRILOC NUT LOCKING DEVICE.
EXAMPLE: R1-A FOR ANCO
3. LEG & BRACE PART NUMBERS ARE STAMPED AS 1,2,3,.....10. THIS COINCIDES WITH LEG PART NUMBERS RSLL-1,RSLL-2,.....RSLL-10 AND BRACE PART NUMBER RSLD-1, RSLD-2,.....RSLD-10 NOTED IN BILL OF MATERIALS ABOVE



PO BOX 5999
 PEORIA, IL 61601-5999
 TOLL FREE 800-727-ROHN

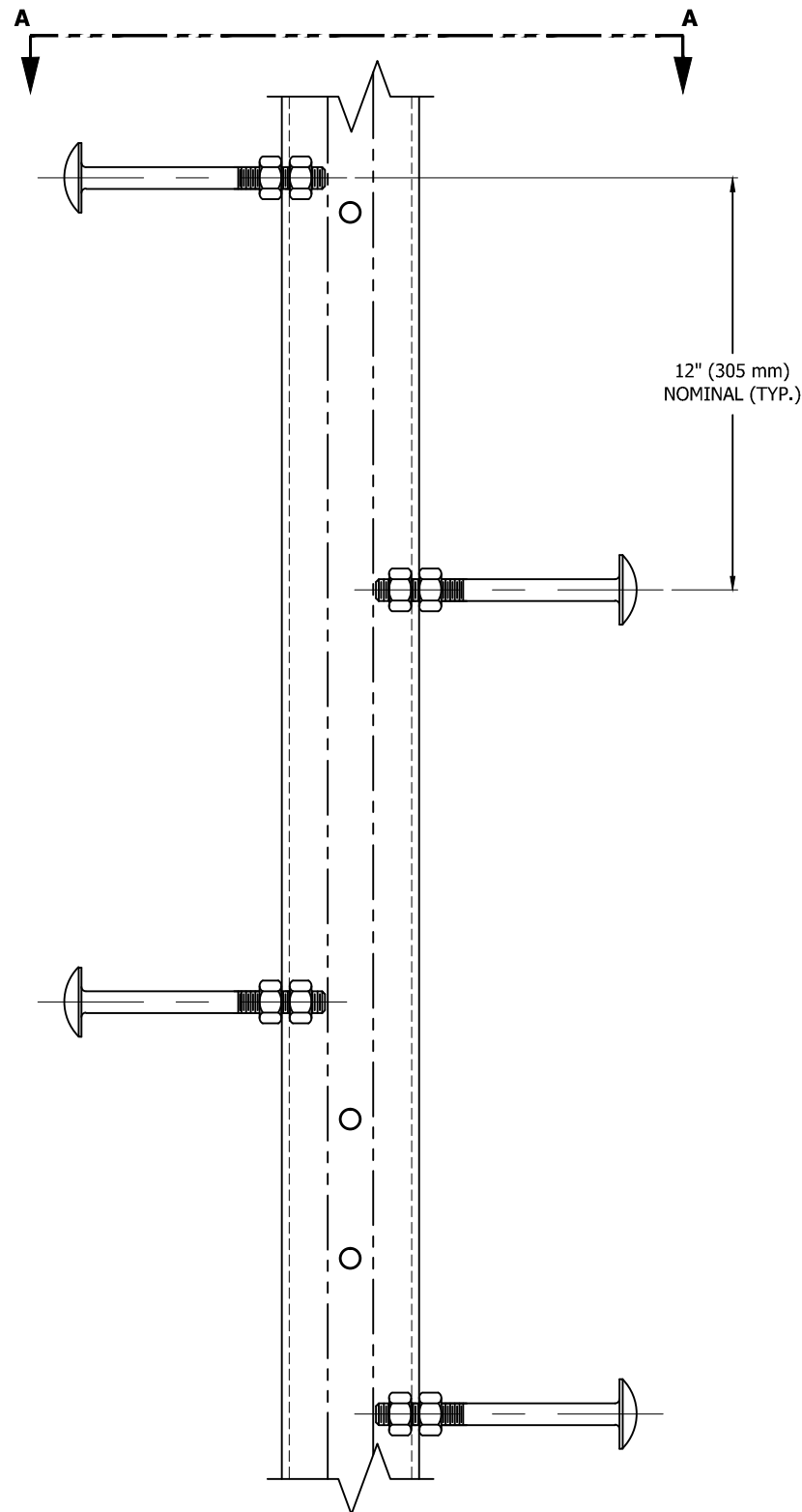
THIS DRAWING IS THE PROPERTY OF ROHN. IT IS NOT TO BE REPRODUCED, COPIED OR TRACED IN WHOLE OR IN PART WITHOUT OUR WRITTEN CONSENT.

RSL TOWER
 SECTION BILL OF MATERIALS
 TUBE BRACING

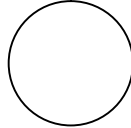
DWN: CEJ CHK'D: JDM DATE: 05/21/2012

ENGR: HA SHEET #: 2 OF 2

DRAWING NO: RSLSEC110-2 REV: 2



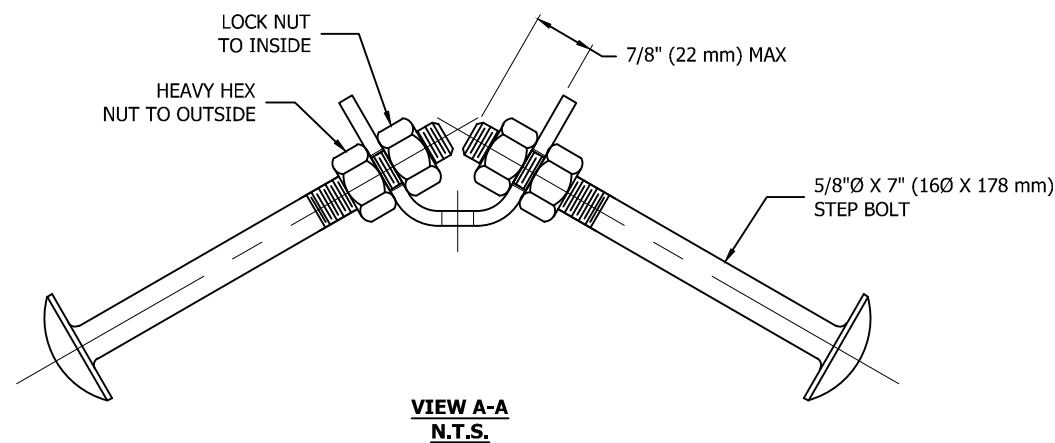
BILL OF MATERIAL			
KIT NO.	PART NO.	QTY.	DESCRIPTION
RSLSTEP	5/8STEP-RSL	10	BOLT ASSY STEP 5/8X7 W/NUT&TRI




STEP BOLTS TO BE CLIMBED BY A COMPETENT CLIMBER ONLY. 100% FALL PROTECTION IS REQUIRED AT ALL TIMES. CLIMBING STEP BOLTS IS DANGEROUS AND CAN CAUSE SERIOUS INJURY OR DEATH. PERFORM AN INSPECTION PRIOR TO CLIMBING TO IDENTIFY POTENTIAL CLIMBING HAZARDS.

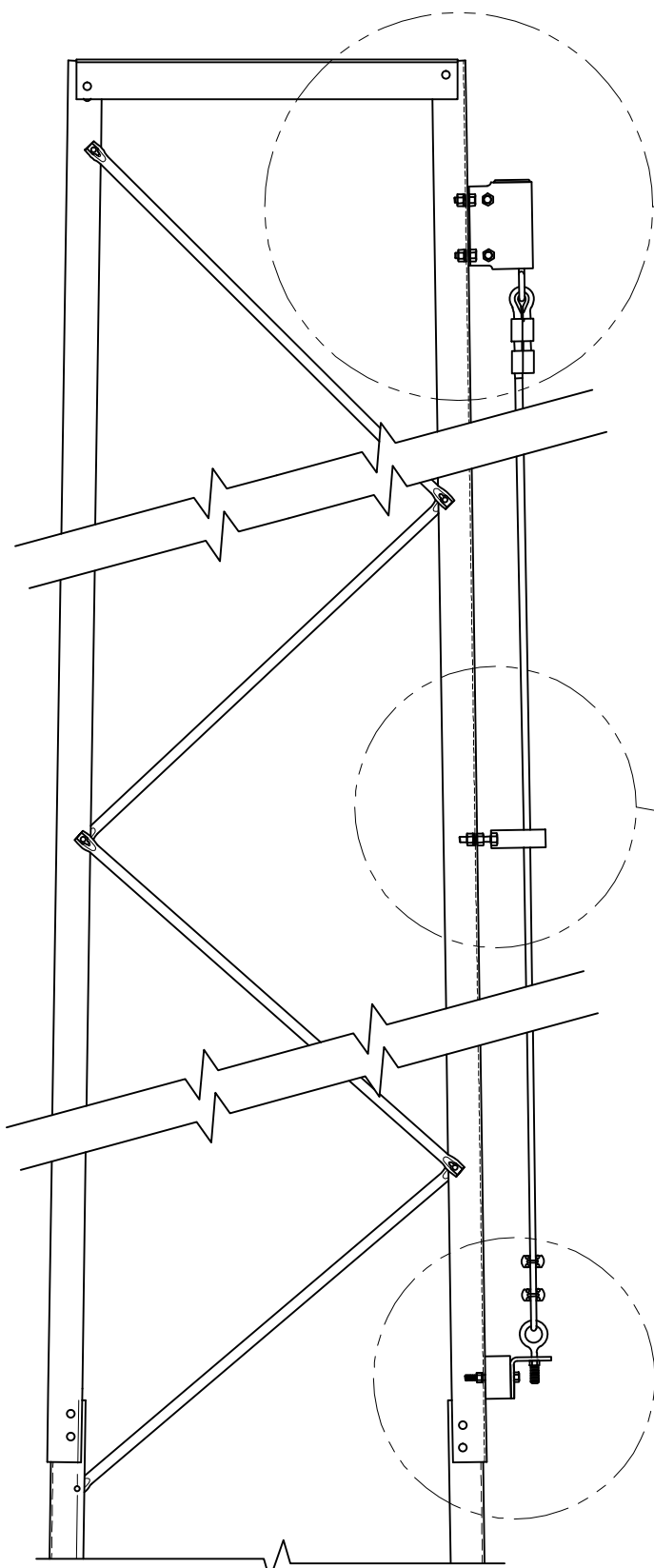
STEP BOLTS SPACING AT SECTION JOINTS MAY NOT BE CONSISTENT WITH THE SPACING THROUGHOUT THE STRUCTURE. FLANGE PLATES AT SECTION JOINTS, GUYS, ATTACHMENTS TO LEGS, ETC. MAY BE AN OBSTRUCTION TO CONTINUOUS CLIMBING.

STEP BOLT CLIMBING WARNING SIGN
(P/N: STEP-TAG INCLUDED IN ACWS PACKAGE)
 (INSTALL WARNING SIGN WITH STEP BOLT IN BOTTOM 5' (1524 mm) OF STRUCTURE)

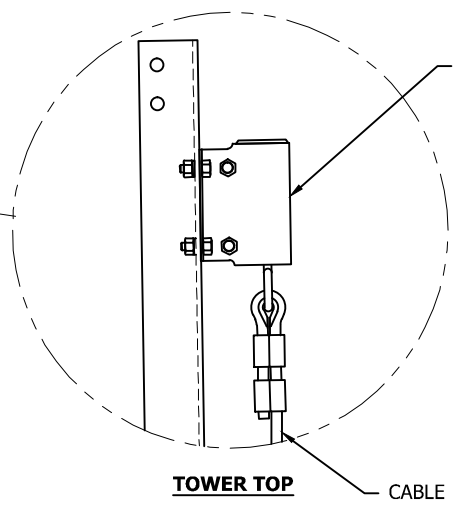


- NOTE:**
- NOMINAL METRIC EQUIVALENTS ARE GIVEN FOR REFERENCE ONLY AND SHALL NOT BE SUBSTITUTED FOR THE DESCRIBED SIZES UNLESS OTHERWISE APPROVED BY ROHN PRODUCTS.
 - ALL DIMENSIONS IN PARENTHESES ARE IN METERS, UNLESS OTHERWISE NOTED.

FILE NO.				
REVISIONS				
REV.	DESCRIPTION	DWN	CHK	APP
3	UPDATE DRAWING	CEJ	JDM	DWG
DATE: 07/30/12				
 PO BOX 5999 PEORIA, IL 61601-5999 TOLL FREE 800-727-ROHN				
THIS DRAWING IS THE PROPERTY OF ROHN. IT IS NOT TO BE REPRODUCED, COPIED OR TRACED IN WHOLE OR IN PART WITHOUT OUR WRITTEN CONSENT.				
RSL TOWER STEP BOLT INSTALL				
DWN:	CEJ	CHK'D:	OH	DATE:
ENGR:	HA	SHEET #:		05/10/12
PRJ. ENGR:		1 OF 1		
DRAWING NO:		REV:		
RSLSTEP		3		

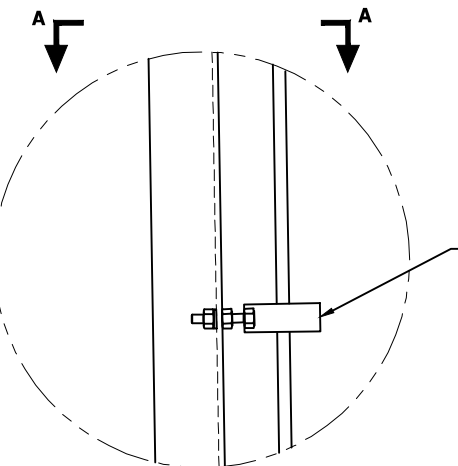


(N.T.S.)



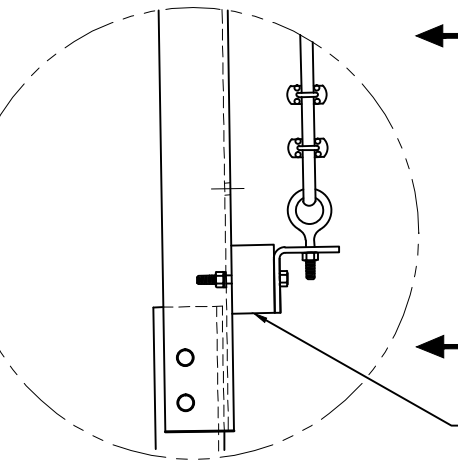
HEAD ADAPTOR ASSEMBLY ATTACHED TO UPPER 9/16"Ø (14Ø mm) ACCESSORY MOUNTING HOLES IN TOWER LEG

TOWER TOP CABLE



CABLE GUIDE ATTACHED TO MID 9/16"Ø (14Ø mm) ACCESSORY MOUNTING HOLES IN TOWER LEG (MAX SPACING 20'± (6096 mm))

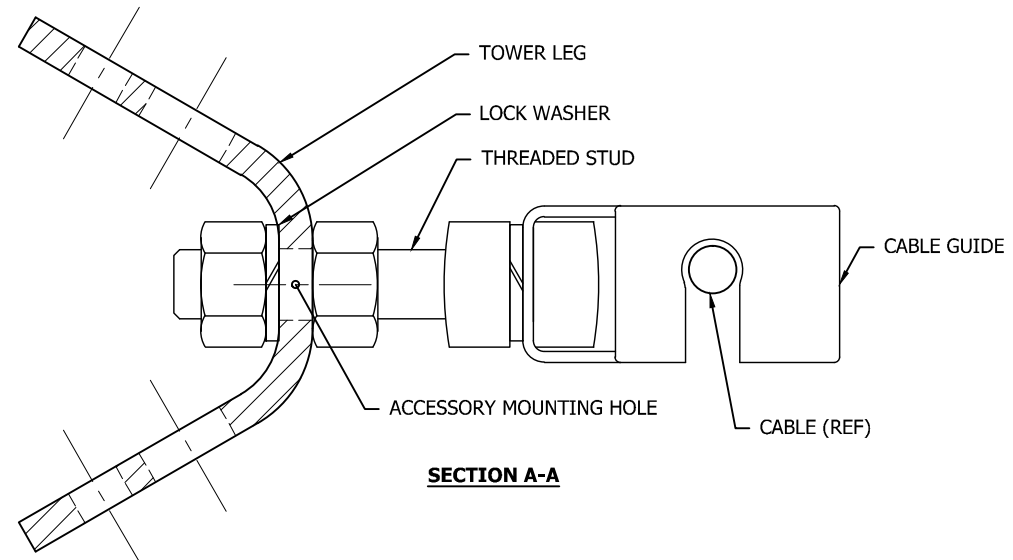
MID POINT OF EACH SECTION



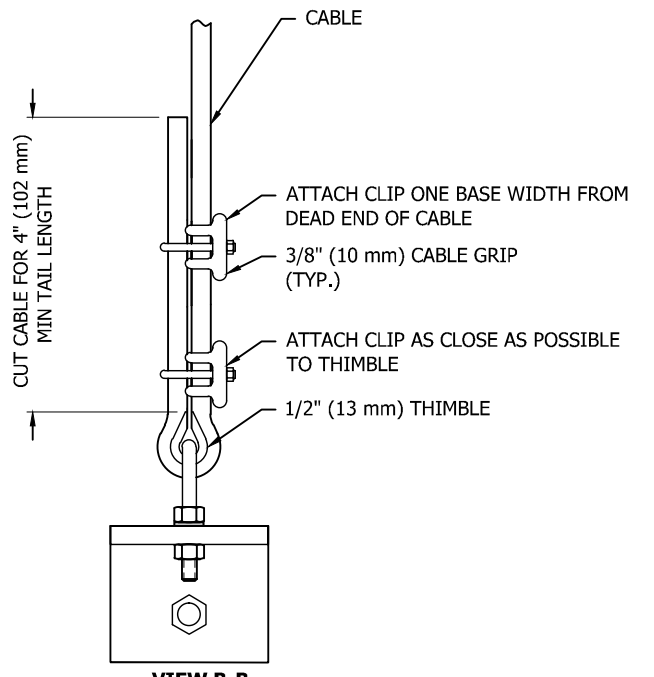
BOTTOM BRACKET ATTACHED TO LOWER 9/16"Ø (14Ø mm) ACCESSORY MOUNTING HOLES IN TOWER LEG

TOWER BASE

SAFETY CLIMB KITS			
TOWER HIEGHTS	KIT NO.	QTY.	DESCRIPTION
0'-50'	TTRSL50	1	SAFETY DEVICE RSL 50'
51'-100'	TTRSL100	1	SAFETY DEVICE RSL 100'




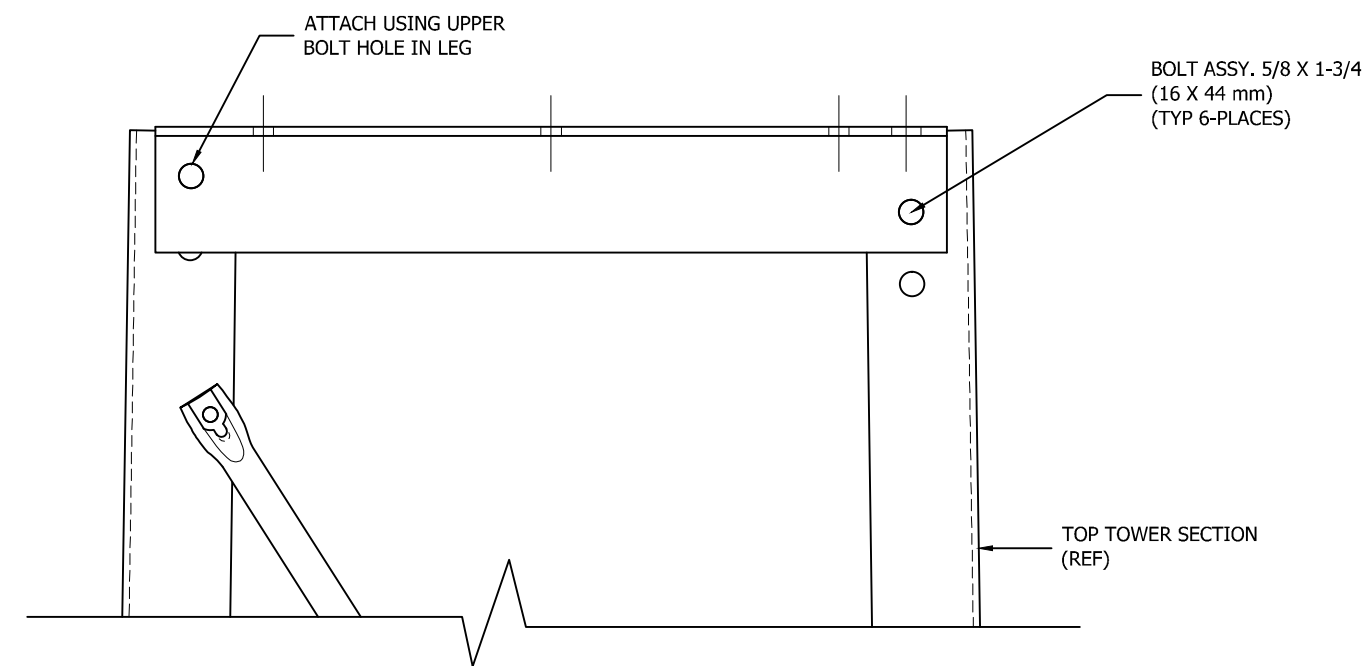
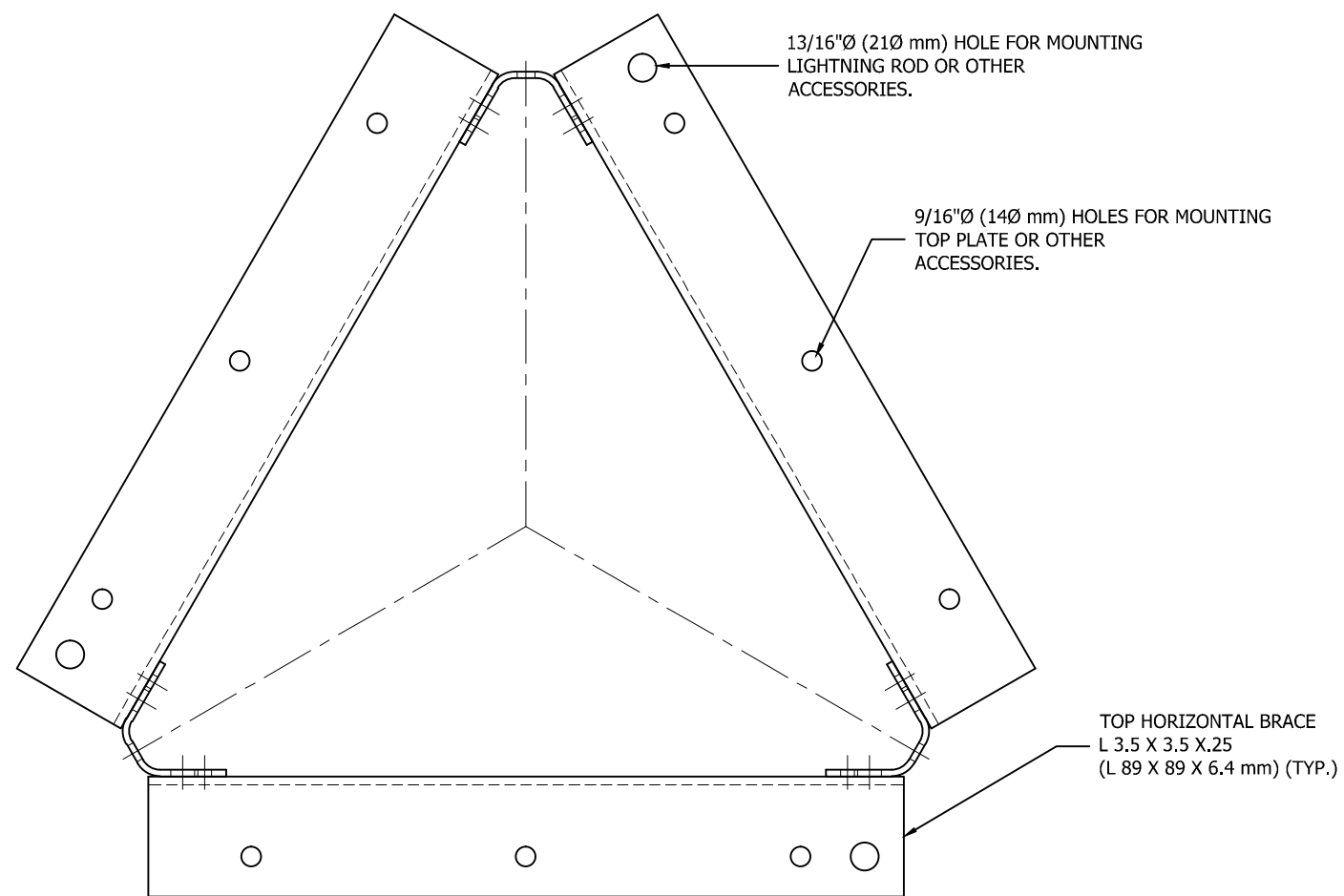
SECTION A-A



VIEW B-B

- NOTE:**
- NOMINAL METRIC EQUIVALENTS ARE GIVEN FOR REFERENCE ONLY AND SHALL NOT BE SUBSTITUTED FOR THE DESCRIBED SIZES UNLESS OTHERWISE APPROVED BY ROHN PRODUCTS.
 - ALL DIMENSIONS IN PARENTHESES ARE IN METERS, UNLESS OTHERWISE NOTED.

FILE NO.				
REVISIONS				
REV.	DESCRIPTION	DWN	CHK	APP
2	ADDED METRIC TO DIMENSIONS, INSTALLATION NOTES, & B.O.M.	CEJ	JDM	DWG
DATE: 07/31/12				
 PO BOX 5999 PEORIA, IL 61601-5999 TOLL FREE 800-727-ROHN				
THIS DRAWING IS THE PROPERTY OF ROHN. IT IS NOT TO BE REPRODUCED, COPIED OR TRACED IN WHOLE OR IN PART WITHOUT OUR WRITTEN CONSENT.				
RSL TOWER SAFETY CLIMB SYSTEM				
DWN:	CHK'D:	DATE:		
CEJ	JDM	10/24/11		
ENGR:	SHEET #:		REV:	
HA	1 OF 1		2	
DRAWING NO:				REV:
DWG-0407				2



TOP HORIZONTAL BRACE KIT BILL OF MATERIAL			
ITEM	P/N	QTY	DESCRIPTION
RSLH1A	RSLH1	3	BRACE H R1 L3.5X.25X1.83'
	210030GALW	6	BOLT ASSY 5/8 X 1-3/4 A325
RSLH2A	RSLH2	3	BRACE H R2 L3.5X.25X2.08'
	210030GALW	6	BOLT ASSY 5/8 X 1-3/4 A325
RSLH3A	RSLH3	3	BRACE H R3 L3.5X.25X2.32'
	210030GALW	6	BOLT ASSY 5/8 X 1-3/4 A325
RSLH4A	RSLH4	3	BRACE H R4 L3.5X.25X2.57'
	210030GALW	6	BOLT ASSY 5/8 X 1-3/4 A325
RSLH5A	RSLH5	3	BRACE H R5 L3.5X.25X2.81'
	210030GALW	6	BOLT ASSY 5/8 X 1-3/4 A325
RSLH6A	RSLH6	3	BRACE H R6 L3.5X.25X3.05'
	210030GALW	6	BOLT ASSY 5/8 X 1-3/4 A325
RSLH7A	RSLH7	3	BRACE H R7 L3.5X.25X3.30'
	210030GALW	6	BOLT ASSY 5/8 X 1-3/4 A325

NOTE:

1. BOLT ASSY'S IN B.O.M. ABOVE CONSIST OF BOLT, HEAVY HEX NUTS, & SPRING LOCK WASHER.
2. ADD SUFFIX A, P, OR T TO SECTION PART NUMBER FOR ANCO, PAL OR TRILOC NUT LOCKING DEVICE.
EXAMPLE: RSLH1A-A FOR ANCO
3. NOMINAL METRIC EQUIVALENTS ARE GIVEN FOR REFERENCE ONLY AND SHALL NOT BE SUBSTITUTED FOR THE DESCRIBED SIZES UNLESS OTHERWISE APPROVED BY ROHN PRODUCTS.
4. ALL DIMENSIONS IN PARENTHESES ARE IN METERS, UNLESS OTHERWISE NOTED.

FILE NO.

REVISIONS

REV.	DESCRIPTION	DWN	CHK	APP
4	CHANGED TITLE DESCRIPTION			
	DATE: 07/27/12	CEJ	JDM	DWG



PO BOX 5999
PEORIA, IL 61601-5999
TOLL FREE 800-727-ROHN

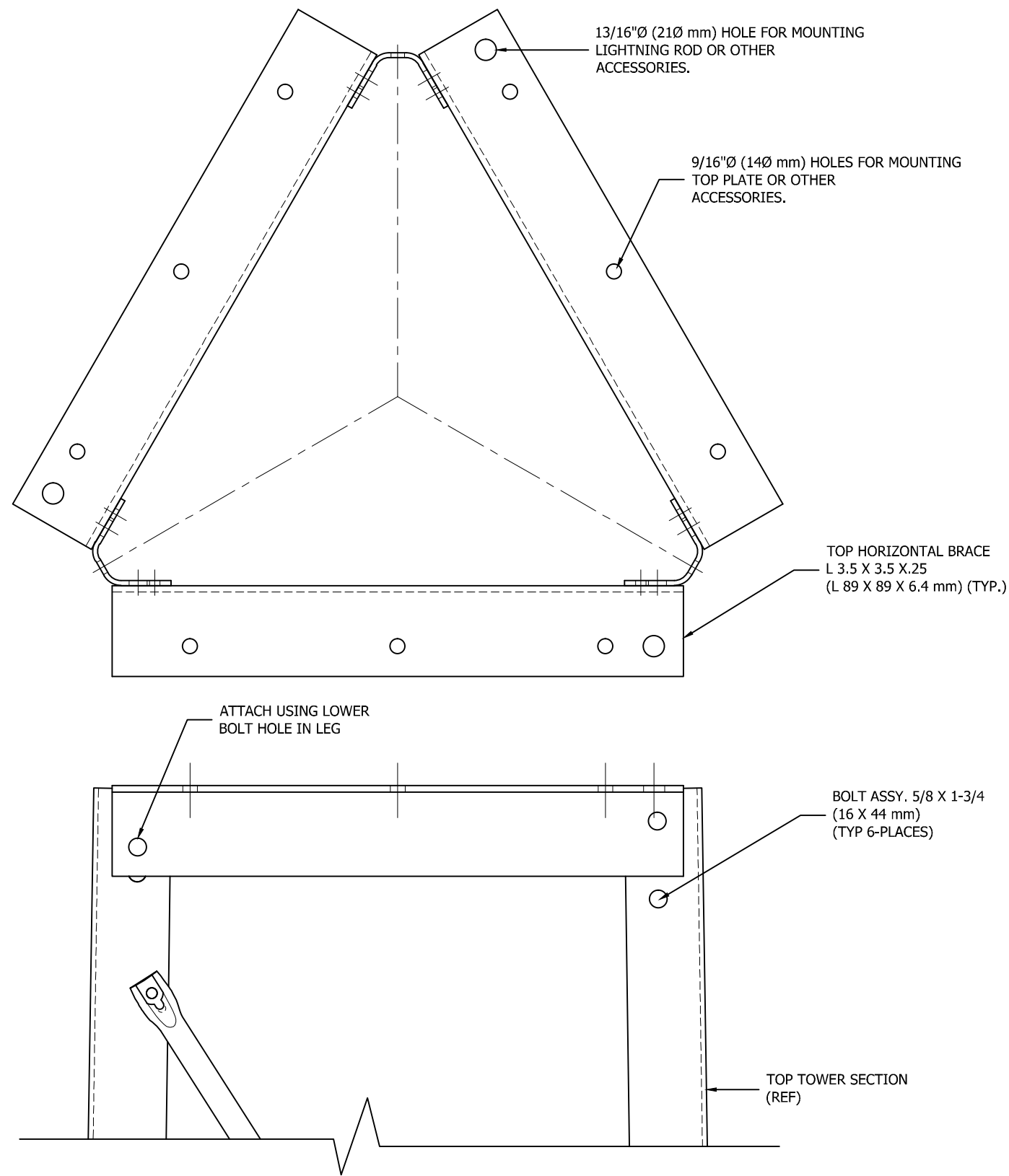
THIS DRAWING IS THE PROPERTY OF ROHN. IT IS NOT TO BE REPRODUCED, COPIED OR TRACED IN WHOLE OR IN PART WITHOUT OUR WRITTEN CONSENT.

RSL TOWER
TOP HORIZ BRACE KIT SECT 1-7

DWN: JDM CHK'D: MDF DATE: JUN/27/11

ENGR: HA SHEET #: 1 OF 1


DRAWING NO: RSLH1-7 REV: 4



TOP HORIZONTAL BRACE KIT BILL OF MATERIAL			
ITEM	P/N	QTY	DESCRIPTION
RSLH8A	RSLH8	3	BRACE H R8 L3.5X.25X3.54'
	210030GALW	6	BOLT ASSY 5/8 X 1-3/4 A325
RSLH9A	RSLH9	3	BRACE H R9 L3.5X.25X3.77'
	210030GALW	6	BOLT ASSY 5/8 X 1-3/4 A325

NOTE:

1. BOLT ASSY'S IN B.O.M. ABOVE CONSIST OF BOLT, HEAVY HEX NUTS, & SPRING LOCK WASHER.
2. ADD SUFFIX A, P, OR T TO SECTION PART NUMBER FOR ANCO, PAL OR TRILOC NUT LOCKING DEVICE.
EXAMPLE: RSLH1A-A FOR ANCO
3. NOMINAL METRIC EQUIVALENTS ARE GIVEN FOR REFERENCE ONLY AND SHALL NOT BE SUBSTITUTED FOR THE DESCRIBED SIZES UNLESS OTHERWISE APPROVED BY ROHN PRODUCTS.
4. ALL DIMENSIONS IN PARENTHESES ARE IN METERS, UNLESS OTHERWISE NOTED.

FILE NO.				
REVISIONS				
REV.	DESCRIPTION	DWN	CHK	APP
3	CHANGED TITLE DESCRIPTION	CEJ	JDM	DWG
DATE: 07/27/12				
 PO BOX 5999 PEORIA, IL 61601-5999 TOLL FREE 800-727-ROHN				
THIS DRAWING IS THE PROPERTY OF ROHN. IT IS NOT TO BE REPRODUCED, COPIED OR TRACED IN WHOLE OR IN PART WITHOUT OUR WRITTEN CONSENT.				
RSL TOWER TOP HORIZ BRACE KIT SECT 8-9				
DWN:	CHK'D:	DATE:		
CEJ	JDM	10/19/11		
ENGR:	SHEET #:			
HA	1 OF 1			
DRAWING NO:				REV:
RSLH8-9				3